

Specimen Preparation Guidelines

SPECIMEN PREPARATION



The following types of specimens can be processed with OncoDEEP™:

- Tissue biopsy
- Fine needle biopsy
- Bone marrow aspirate
- Bronchoalveolar plural fluid
- Ovarian ascites fluid

All those tissue samples should be fixed in 10% neutral-buffered formalin within 30 minutes after surgery excision. Tissue samples should be fixed for a period between 18 to 24 hours maximum and then embedded in IHC-grade paraffin.

Bone sample



DECALCIFICATION SOLUTION MATERIAL

- 280g EDTA
- ddwater 1.5L
- 180ml Ammonium Hydroxide
- Mix well and adjust pH to 7.1 with Ammonium Hydroxide
- Add ddwater to 2L

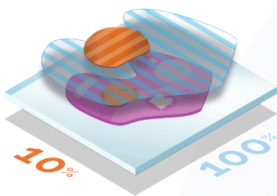
Bone sample requires a specific fixation procedure:

1. Fix the bone in formalin at 4°C for 3 days maximum (depending on the thickness of the biopsy)
2. Decalcification in 14% EDTA solution at 4°C for 3-5 days (change fresh 14% EDTA solution every 24 hours)
3. Wash in PBS for 2 hours and then proceed to classical embedding process in paraffin.

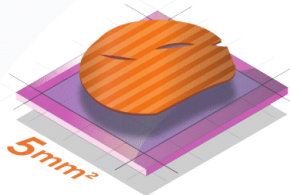
SPECIMEN QUALIFICATION



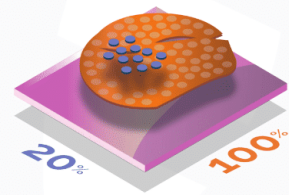
NOTE: The quality of laboratory test results is highly dependent upon proper specimen collection and handling procedures. All cytologic and histologic samples will be reviewed by a pathologist internally and a specimen qualification will be made. Additional or alternate material may be requested for optimal analysis.



The tumor tissue must be > 10% of the whole sample



The size of the tumor tissue must be > 5mm²



The lymphocytes invasion must be < 20% in the region where the tumor cells are located



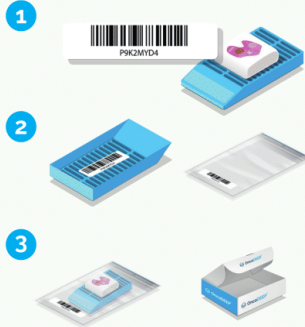


NOTE: Only ONE tumor block should be sent, and preferably from the most recent surgery or biopsy. If several blocks are sent, the process will be stopped until the identification of the most representative tumor block is made. In that case, this identification and selection process will be made at extra cost of 50€ and the starting date of the analysis will correspond to the confirmation of this identification. Block leftovers are shipped back upon request on a monthly basis at the end of the process.

WHEN SENDING A TUMOR BLOCK

Don't prepare any H&E slide, OncoDNA will prepare one on-site (included in the cost of the analysis).

PREFERRED SOLUTION



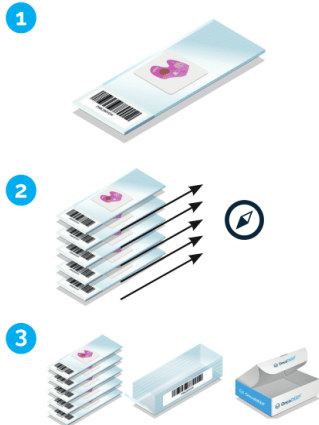
Add the self-sticking barcode available in the Shipment Kit at the back of the FFPE block.

Place the tumor block in the small transparent barcoded plastic bag provided.

Place the wrapped tumor block in the foam of the OncoDEEP Shipment Kit.

WHEN SENDING SLIDES

Please contact us before any slide shipment.



Prepare the instruments for H&E and unstained slides :

- Use a microtome blade for each case
- Clean the water bath between cases
- Wear gloves and change them frequently, especially between specimens, to prevent contamination of the sample.

Prepare 20 slides of 5 µm on Superfrost™ Plus and make sure that the sections on each slide are oriented in the same direction. Do not place cover slips on the unstained slides.

Insert the slides into the slide containers included in the OncoDEEP Shipment Kit.

